

EE45 Series

Condensation Monitor

EE45 condensation monitors are used to monitor the formation of condensation on chilled ceilings and to prevent condensation at critical spots of heating-, ventilation- and air conditioning systems. It is also used as a dew point monitor for systems operating near the dewpoint.

Because of the temperature coupling between the condensation monitor and the environment, the relative humidity is a measure for the dew point. The condensation monitor measures the relative humidity near the dew point using its high-quality capacitive RH sensor. At reaching the switching point of 90% RH the output will provide an early warning signal for the initiation of control steps (increasing the initial water temperature, reducing the cooling capacity, switching on the heating, etc...).

A special coating protects electronics and sensor against contamination. The EE45 series can be mounted on pipes, ducts and walls.



Typical Applications

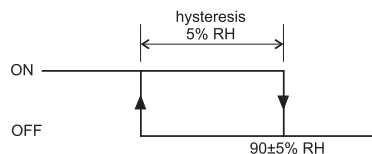
chilled ceilings
 heating-, ventilation- and
 air conditioning systems

Features

early detection of condensation danger
 compact design
 fast response time
 protection against contamination for
 sensor & electronics by a special coating
 simple and easy mounting

Technical Data

Humidity sensor	HC103
Working range	10...100% RH
Output	floating photocoupler output
Switching point at 25°C (77°F)	90±5% RH



Max. switch voltage	< 50V DC	
Max. switch current	< 10 mA DC	
Current consumption	< 10 mA _{eff}	
Supply voltage	SELV 24V AC/DC ±20%	SELV = Safety Extra Low Voltage
Response time at change of duct resp. wall temperature	t ₉₀ < 3 min.	
Response time at change of rel. humidity	t ₉₀ < 25 sec.	
Connection	4 leads cable	
Cable length	see to order guide	
Sensor / electronic protection	by special coating (permeable for water vapour)	
Electromagnetic compatibility according	EN 61000-6-2 EN 61000-6-3 EN 61326-1+A1+A2	
Temperature range	working temperature range 0...50°C (32...122°F) storage temperature range -20...70°C (-4...158°F)	

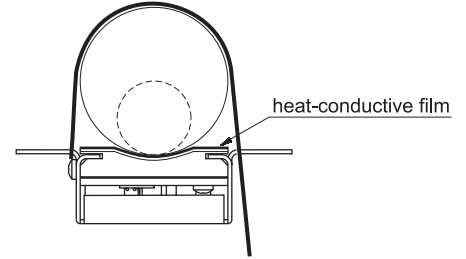
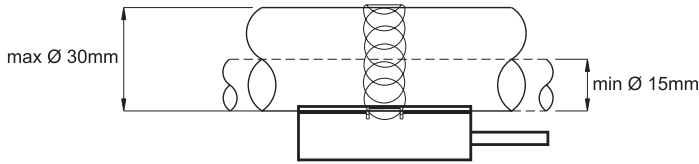


Dimensions (mm)

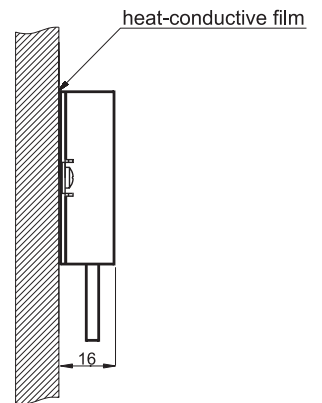
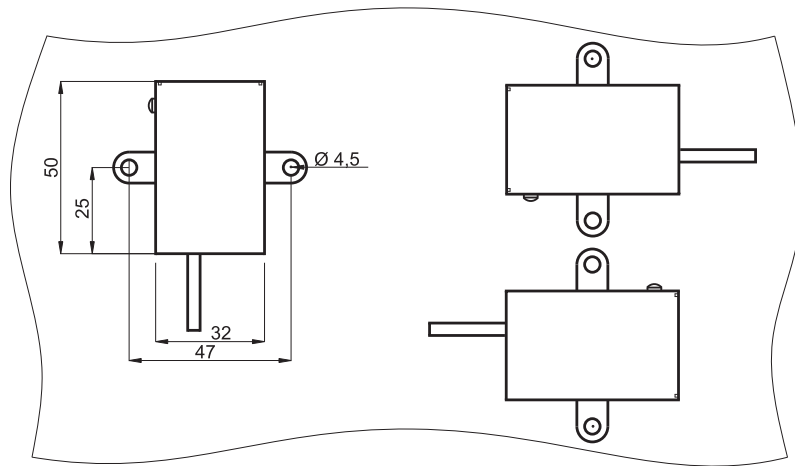
1 mm = 0.03937" / 1" = 25.4 mm

Installation

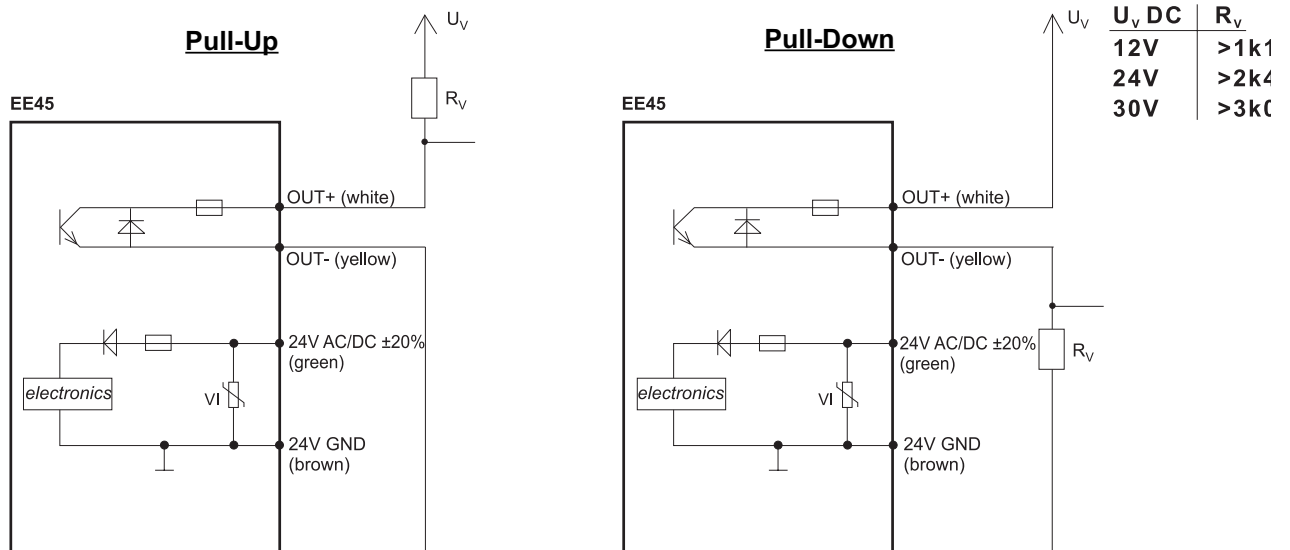
Pipe / Duct mounting



Wall mounting / versions



Connection Diagram



Ordering Guide

Cable length 2m (6.6ft) **(K200)**
 5m (16.4ft) **(K500)**

Order Example

EE45-K500
 Condensation Monitor EE45 Series
 Cable length: 5m (16.4ft)