

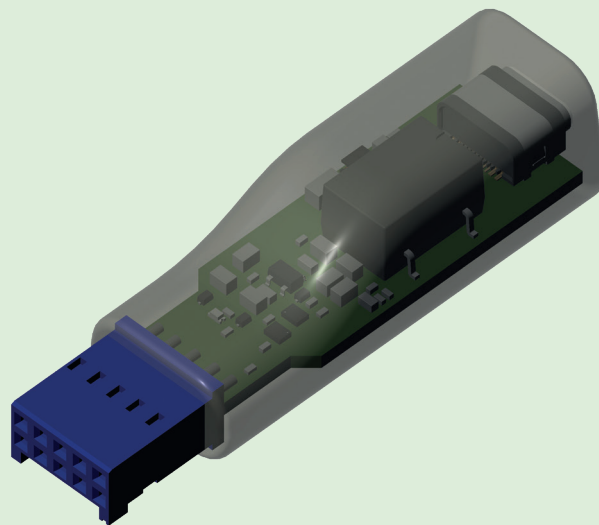


—  
your partner  
in sensor  
technology.



# Datasheet HA011070

**USB-C Configuration Stick**



# HA011070

## USB-C Configuration Stick

### Easy Configuration and Adjustment of E+E Measuring Instruments

The HA011070 USB-C configuration stick is a tool for connecting E+E devices to a PC or notebook. In combination with the product configuration software PCS10 (free download at [www.epluse.com/pcs10](http://www.epluse.com/pcs10)) and a standard USB-C cable, the configuration stick enables setup and adjustment of various E+E sensors.

### Functionality and Design

PCS10 functionality depends on the E+E sensor connected and may include:

- Viewing actual measurement data
- Selection of physical quantities and units of the measurement at the outputs
- Analogue output scaling of physical quantities
- 1-, 2-point and offset adjustment
- Display settings
- Digital communication settings
- Application settings

The desired distance between E+E sensor and PC or notebook can be easily realized using standard USB cables of the appropriate length.

### Simple and Error-Free Operation

The USB-C configuration stick HA011070 galvanically isolates the USB interface of the PC or notebook from the supply voltage of the product. This allows in-process configuration and adjustment of E+E instruments.

For easy and faultless use, an anti-twist plug prevents incorrect installation of the adapter on the E+E sensors board.

LED visualization in the transparent enclosure of the USB-C Configuration stick indicates whether the power supply and the sensor function are correct.

The USB-C configuration stick is included in delivery. A standard USB-C cable (e.g. HA010327 USB-C to USB-A) is required for connection to a PC or notebook.

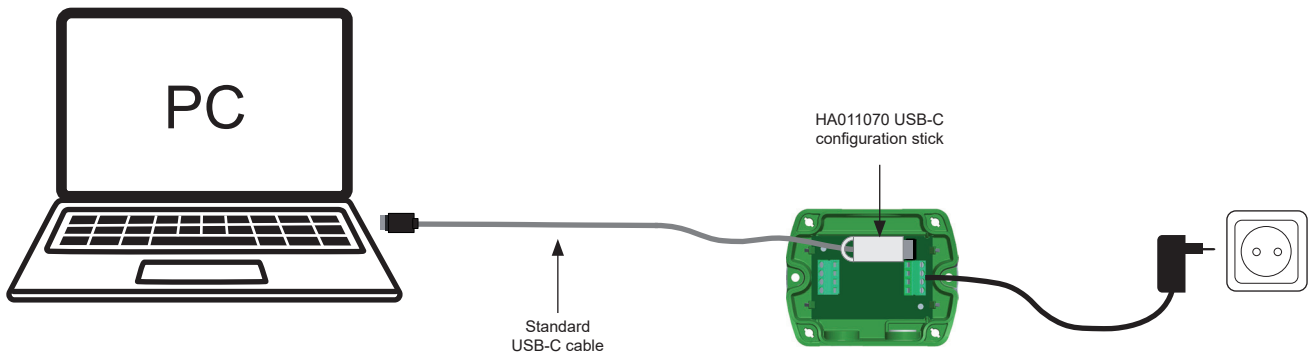
## Supported Products

- EE160 / EE210 / EE211 / EE212
- EE431 digital / EE451 digital / EE471 digital
- EE600 / EE610
- EE650 / EE660
- EE820 / EE850
- HTS201 digital / TES201 digital / CDS201 digital

# Configuration Using HA011070

## NOTICE

- The USB-C configuration stick HA011070 (supported by USB 2.0 and higher) galvanically isolates the USB interface of the PC from the supply voltage of the E+E sensor.
- When using the USB-C configuration stick the E+E sensor needs external supply.
- Please establish the USB connection first. Then connect it to the E+E device to ensure trouble-free operation.



E+E sensor configuration using the HA011070 USB-C configuration stick

## Details

### EE160

#### **i** PLEASE NOTE

The EE160 sensor purchased before 01/2023 are not supported by HA011070. Please check the EE160 user manual for details.

### EE431 Digital / EE451 Digital / EE471 Digital

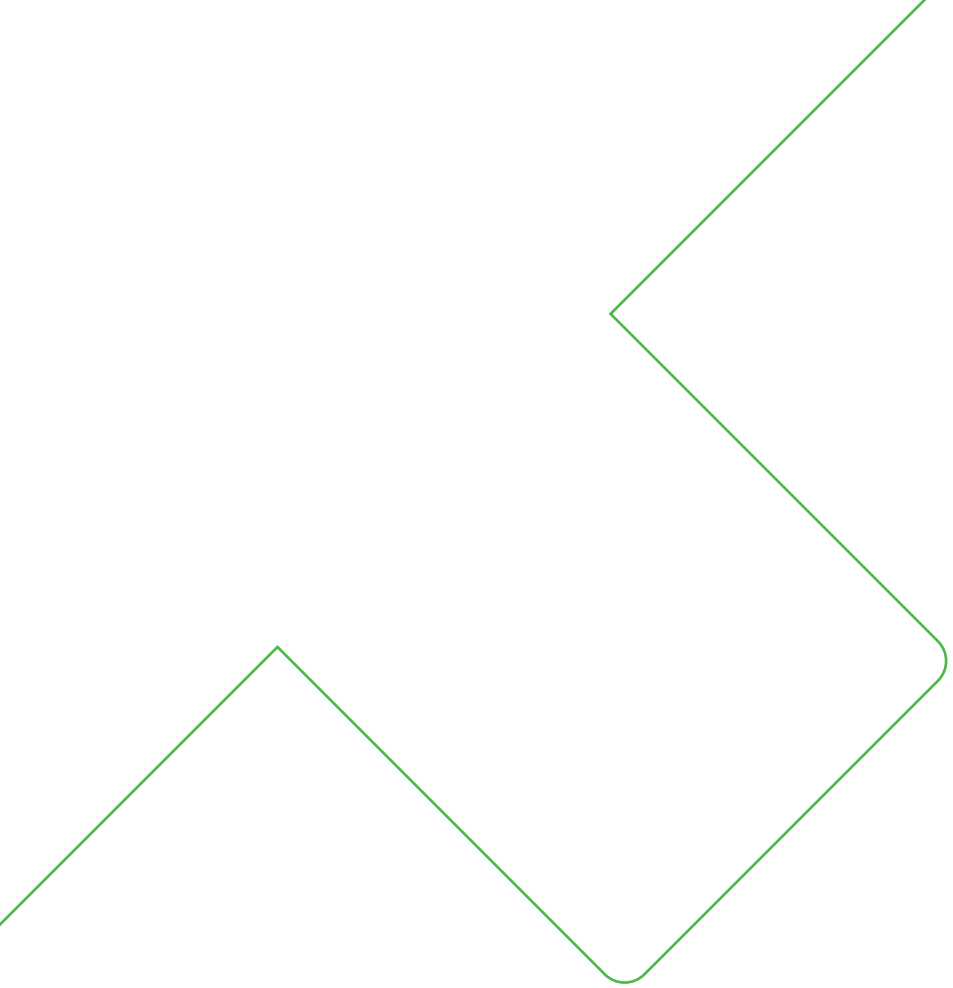
#### **i** PLEASE NOTE

EE431 digital / EE451 digital / EE471 digital sensors are not yet supported by PCS10. Please use EE-PCS instead (free download at [www.epluse.com/configurator](http://www.epluse.com/configurator)).

### HTS201 Digital / TES201 Digital / CDS201 Digital

#### **i** PLEASE NOTE

A separate power supply must be provided for the configuration of the HTS201 digital / TES201 digital / CDS201 digital sensors, as this is not possible using the terminals fixed to the bottom part of the enclosure.



Company Headquarters &  
Production Site

**E+E Elektronik Ges.m.b.H.**  
Langwiesen 7  
4209 Engerwitzdorf | Austria  
T +43 7235 605-0  
F +43 7235 605-8  
info@epluse.com  
www.epluse.com

Subsidiaries

**E+E Sensor Technology (Shanghai) Co., Ltd.**  
T +86 21 6117 6129  
info@epluse.cn

**E+E Elektronik France SARL**  
T +33 4 74 72 35 82  
info.fr@epluse.com

**E+E Elektronik Deutschland GmbH**  
T +49 6171 69411-0  
info.de@epluse.com

**E+E Elektronik India Private Limited**  
T +91 990 440 5400  
info.in@epluse.com

**E+E Elektronik Italia S.r.l.**  
T +39 02 2707 86 36  
info.it@epluse.com

**E+E Elektronik Korea Ltd.**  
T +82 31 732 6050  
info.kr@epluse.com

**E+E Elektronik Corporation**  
T +1 847 490 0520  
info.us@epluse.com



—  
your partner  
in sensor  
technology.